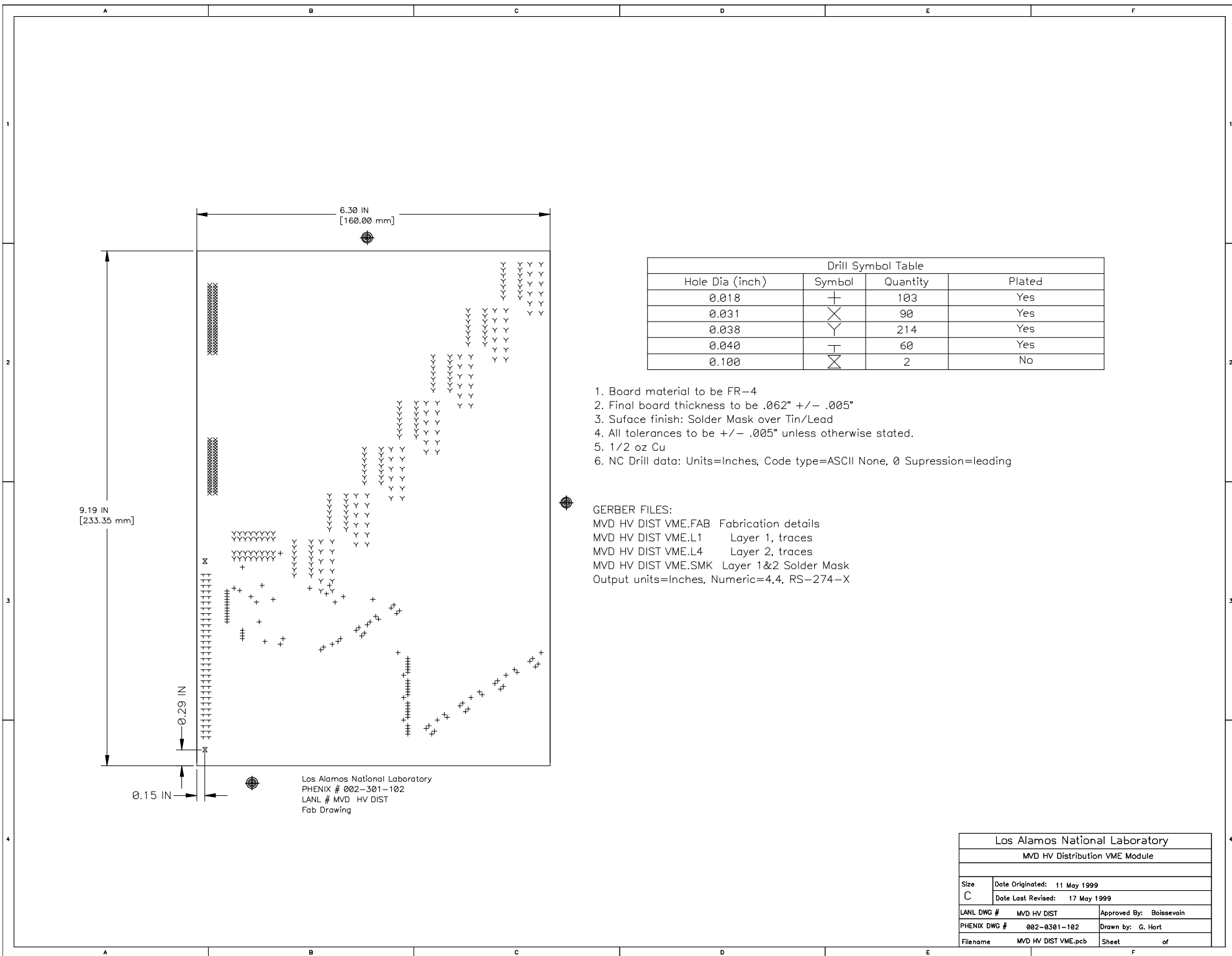


Los Alamos National Laboratory
 PHENIX # 002-301-102
 LANL # MVD HV DIST
 Bottom Side, Layer 2

Los Alamos National Laboratory		
MVD HV Distribution VME Module		
Size	Date Originated: 11 May 1999	
C	Date Last Revised: 17 May 1999	
LANL DWG #	MVD HV DIST	Approved By: Boissevain
PHENIX DWG #	002-0301-102	Drawn by: G. Hart
Filename	MVD HV DIST VME.pcb	Sheet of



Los Alamos National Laboratory
 PHENIX # 002-301-102
 LANL # MVD HV DIST
 Fab Drawing

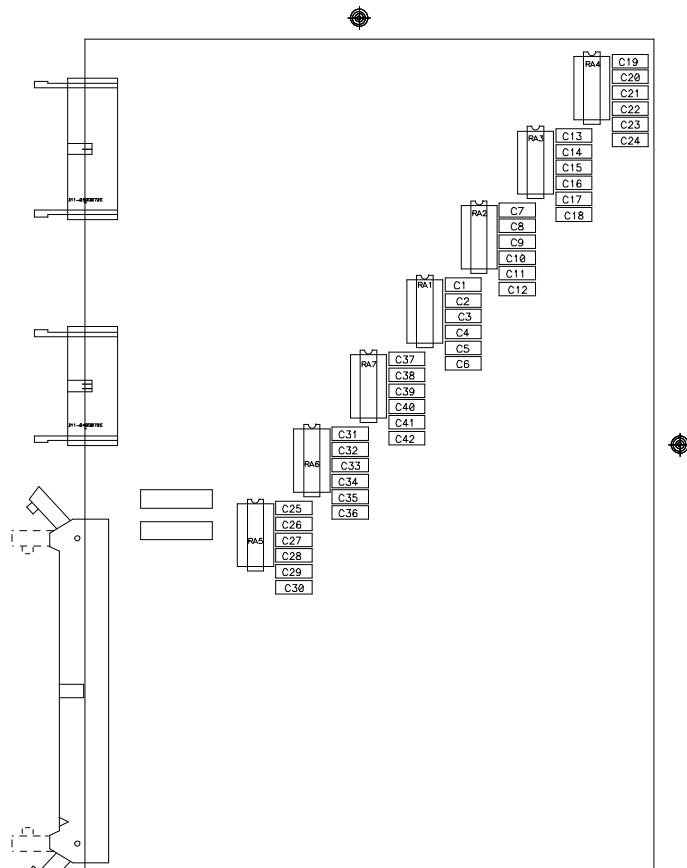
Drill Symbol Table			
Hole Dia (inch)	Symbol	Quantity	Plated
0.018	+	103	Yes
0.031	Y	90	Yes
0.038	Y	214	Yes
0.040	T	60	Yes
0.100	X	2	No

1. Board material to be FR-4
2. Final board thickness to be .062" +/- .005"
3. Surface finish: Solder Mask over Tin/Lead
4. All tolerances to be +/- .005" unless otherwise stated.
5. 1/2 oz Cu
6. NC Drill data: Units=Inches, Code type=ASCII None, Ø Supression=leading

GERBER FILES:
 MVD HV DIST VME.FAB Fabrication details
 MVD HV DIST VME.L1 Layer 1, traces
 MVD HV DIST VME.L4 Layer 2, traces
 MVD HV DIST VME.SMK Layer 1&2 Solder Mask
 Output units=Inches, Numeric=4,4, RS-274-X

Los Alamos National Laboratory		
MVD HV Distribution VME Module		
Size	Date Originated: 11 May 1999	Approved By: Boissevain
C	Date Last Revised: 17 May 1999	
LANL DWG #	MVD HV DIST	Drawn by: G. Hart
PHENIX DWG #	002-0301-102	
Filename	MVD HV DIST VME.pcb	Sheet of

ITEM	REF #	QTY	MANUFACTURER	DESCRIPTION	PART #
1	P1	1	Thomas & Betts	Header, Mini, Right Angle, 50 pin, w/eject-latch	311-050D072E
2	P2	1	Thomas & Betts	Header, Mini, Right Angle, 40 pin, w/eject-latch	311-040D072E
3	P3	1	3M	Header, Right Angle, 60 pin, w/eject-latch	3372-5002
4	JH1-2	2	SAMTEC	Header, 8 pair	TSW-108-05-L-D
5		1	SAMTEC	Jumper, 8 pair	MNT-108-BK-G
6		7	SAMTEC	IC Socket, 14 pin DIP	ICA-314-SSST
7	RA1-7	7	Bourns	Resistor array, 7 equal value isolated, 22k ohm	4114R-001-223
8	C1-42	42	Kemet	Capacitors, 200 v, .22 uF	C340C224K2R5CA



Los Alamos National Laboratory
 PHENIX # 002-301-102
 Assembly Drawing

Los Alamos National Laboratory		
MVD HV Distribution VME Module		
Size	Date Originated: 11 May 1999	Approved By: Boissevain
C	Date Last Revised: 17 May 1999	
LANL DWG #	MVD HV DIST	Drawn by: G. Hart
PHENIX DWG #	002-0301-102	Sheet of
Filename	MVD HV DIST VME.pcb	

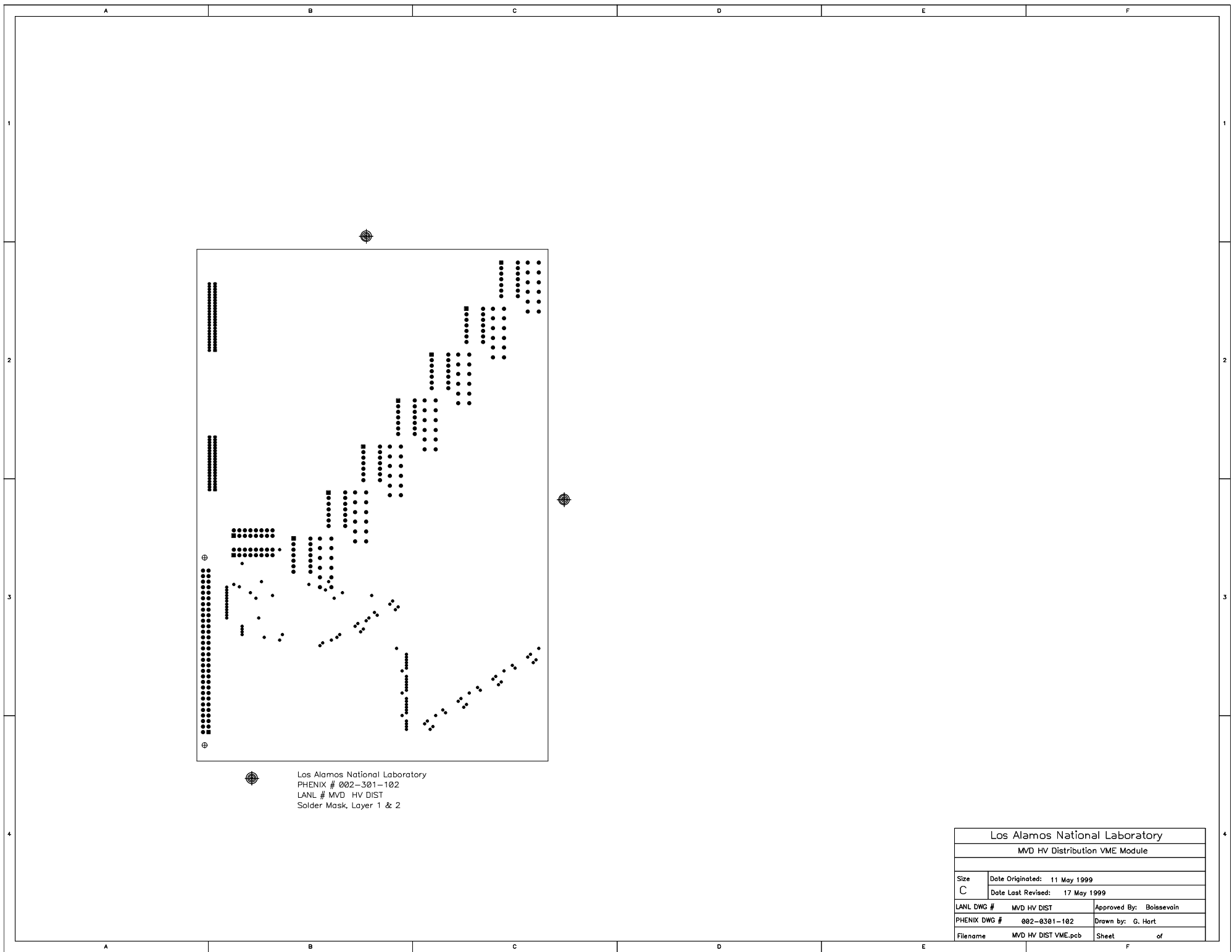


Los Alamos National Laboratory
 MVD HV DIST, 13 May, 1999
 PHENIX # 002-0301-102



Los Alamos National Laboratory
 PHENIX # 002-301-102
 LANL # MVD HV DIST
 Top Side, Layer 1

Los Alamos National Laboratory		
MVD HV Distribution VME Module		
Size	Date Originated: 11 May 1999	
C	Date Last Revised: 17 May 1999	
LANL DWG #	MVD HV DIST	Approved By: Boissevain
PHENIX DWG #	002-0301-102	Drawn by: G. Hart
Filename	MVD HV DIST VME.pcb	Sheet of



Los Alamos National Laboratory
 PHENIX # 002-301-102
 LANL # MVD HV DIST
 Solder Mask, Layer 1 & 2

Los Alamos National Laboratory		
MVD HV Distribution VME Module		
Size	Date Originated: 11 May 1999	
C	Date Last Revised: 17 May 1999	
LANL DWG #	MVD HV DIST	Approved By: Boissevain
PHENIX DWG #	002-0301-102	Drawn by: G. Hart
Filename	MVD HV DIST VME.pcb	Sheet of