



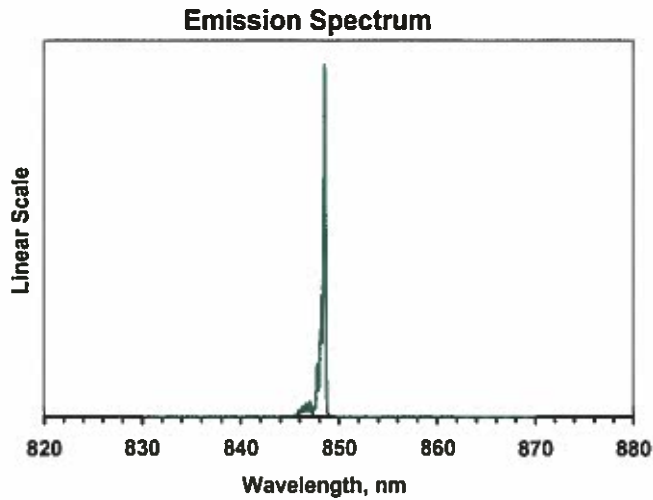
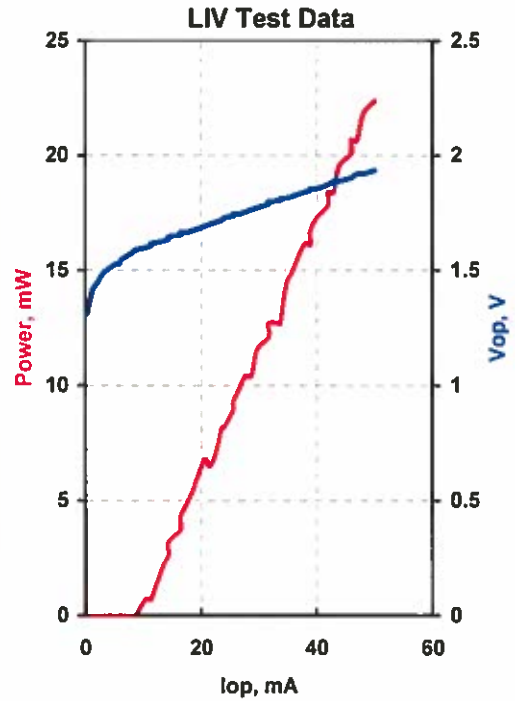
QPHOTONICS, LLC

3830 Packard Road,
Suite 170,
Ann Arbor, MI 48108,
USA

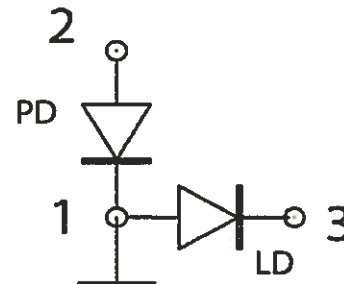
Phone: 734-477-0133
Fax: 734-477-0166
Email: info@qphotonics.com
http://www.qphotonics.com

MODEL	QFLD-850-20SAX
PART NUMBER	LC170145

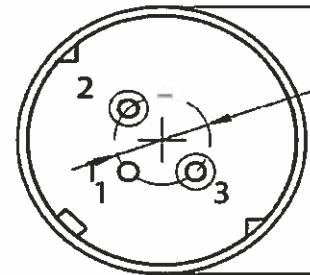
Parameter	Value	Units
Internal Temperature	25	°C
Thermistor Resistance	10.0	kΩ
Optical Output Power	20.1	mW
Threshold Current	10	mA
Operating Current	45	mA
Maximum Operating Current	50	mA
Operating Voltage	1.9	V
Monitor Current	1.02	mA
Center Wavelength	848.2	nm
Spectral Width	0.41	nm



Fiber Type	HI780
NA	0.14
Connector	FC/PC



Pin	Connection
1	LD Anode, PD Cathode
2	PD Anode
3	LD Cathode



Operator	RL
Date	8/10/2017



BOTTOM VIEW



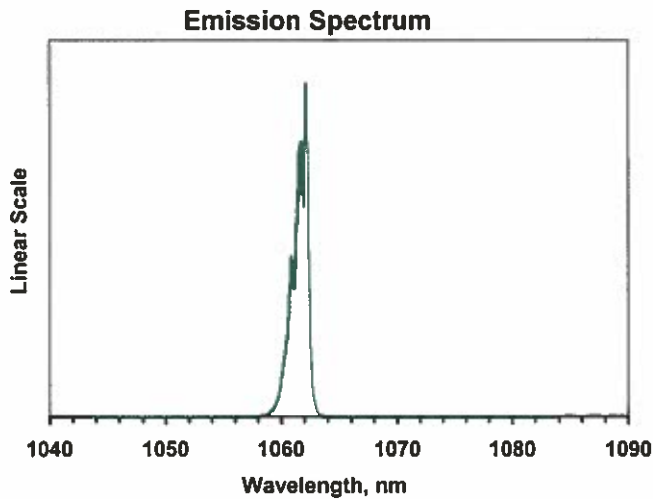
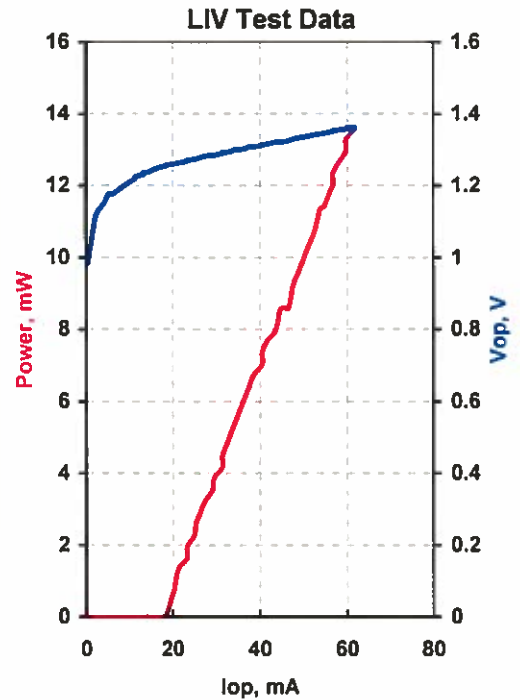
QPHOTONICS, LLC

3830 Packard Road,
Suite 170,
Ann Arbor, MI 48108,
USA

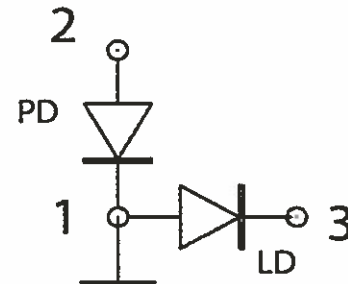
Phone: 734-477-0133
Fax: 734-477-0166
Email: info@qphotonics.com
http://www.qphotonics.com

MODEL	QFLD-1064-10SAX
PART NUMBER	LC172822

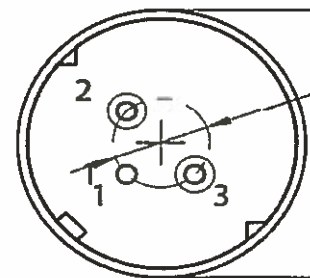
Parameter	Value	Units
Internal Temperature	25	°C
Thermistor Resistance	10.0	kΩ
Optical Output Power	10.2	mW
Threshold Current	18	mA
Operating Current	50	mA
Maximum Operating Current	55	mA
Operating Voltage	1.33	V
Monitor Current	0.07	mA
Center Wavelength	1061.5	nm
Spectral Width	1.11	nm



Fiber Type	HI1060
NA	0.14
Connector	FC/PC



Pin	Connection
1	LD Anode, PD Cathode
2	PD Anode
3	LD Cathode



Operator	RL
Date	8/10/2017

