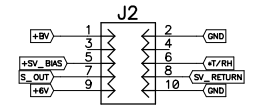
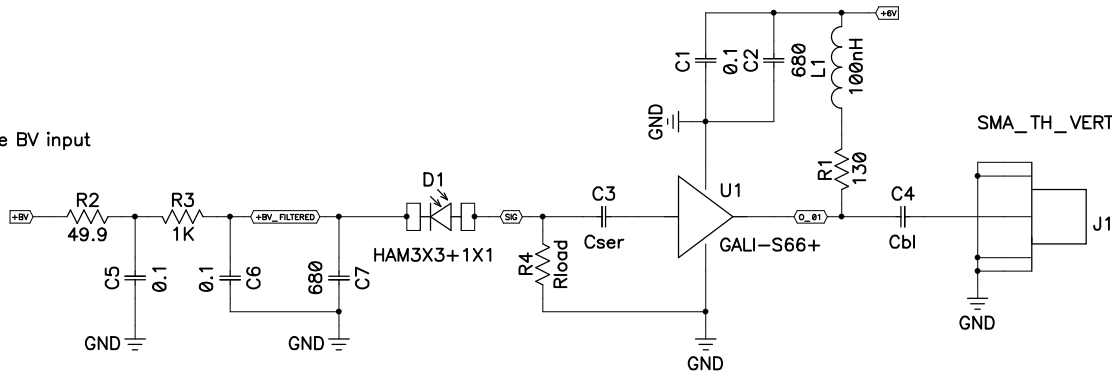
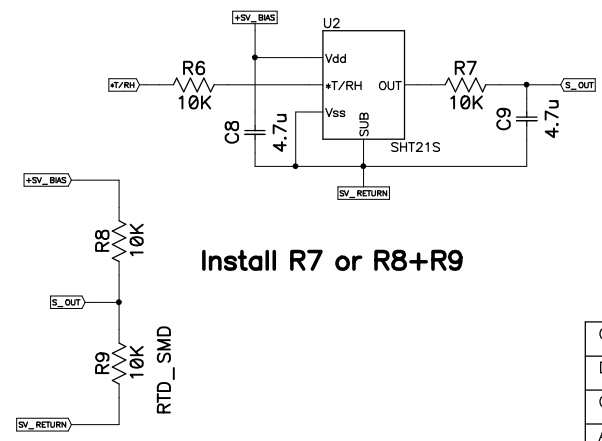


Negative BV input

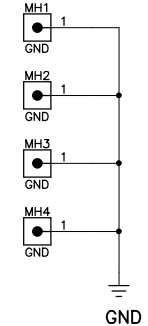



FCI20021521-00010

+BV/GND - bias voltage for MPPC
 +SV_BIAS and SV_RETURN -
 - reference voltage and GND
 for an RTD or SHT21S sensor,
 +T/RH2 - selection between
 measuring Temperature and
 Relative Humidity,
 low - T, high - RH
 S_OUT - sensor output voltage



Install R7 or R8+R9



Originator	S. Los	
Drawn		
Checked		
Approved	S. Los	
	FERMI NATIONAL ACCELERATOR LABORATORY UNITED STATES DEPARTMENT OF ENERGY	
	Title S10931 Hamamatsu x10 Amplifier Readout	
Size	Drawing Number	Rev
C		
Filename	Sheet 1 of 1	